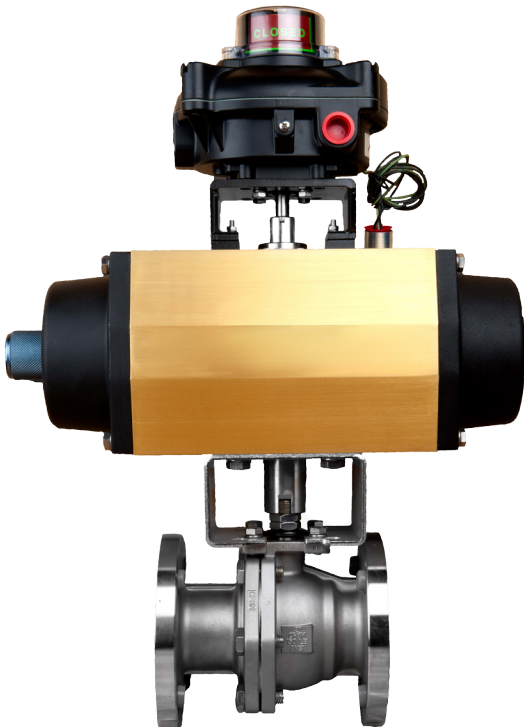
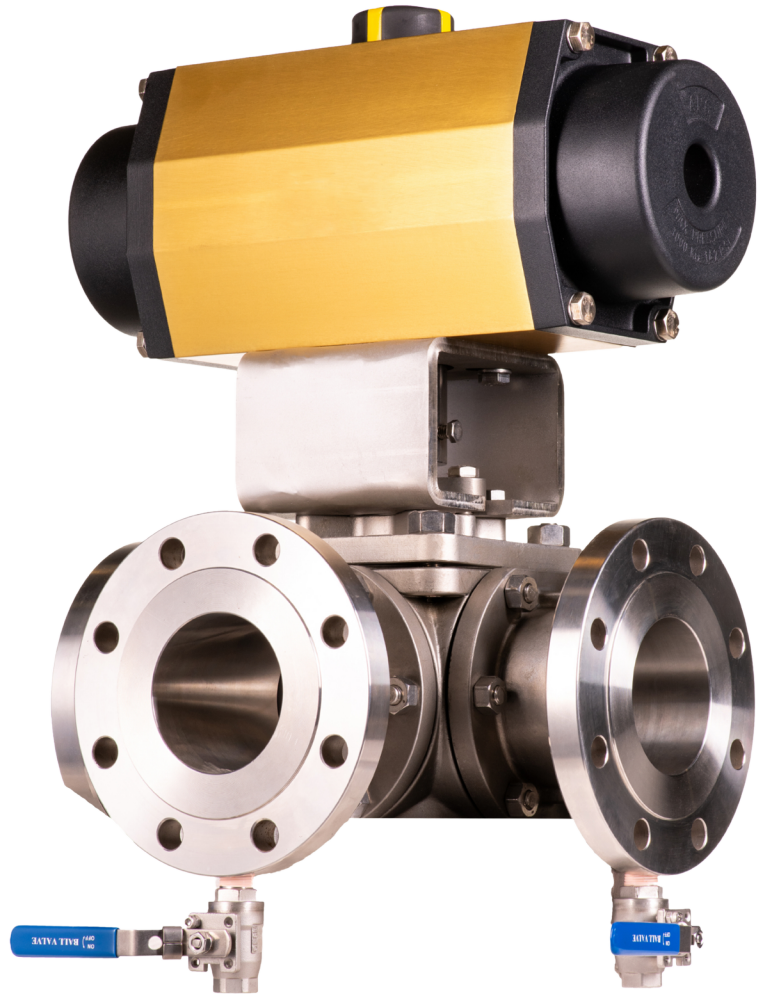
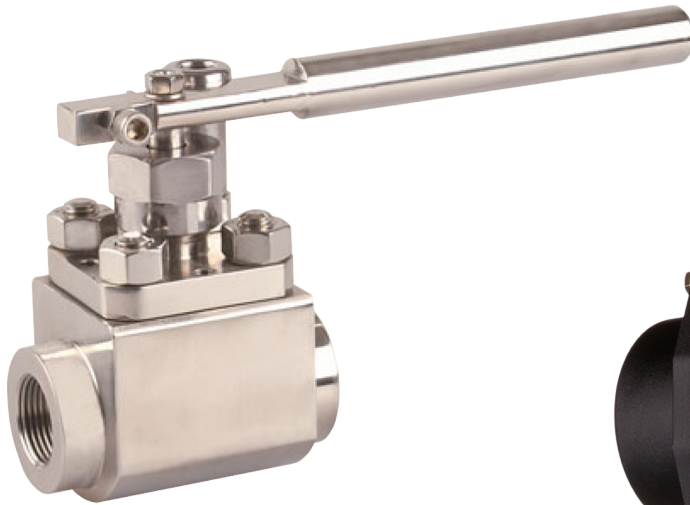


VCI® BRAND PRODUCTS



VCI®

CSA & FM Global Certified
Emergency Safety Shut-Off Valves



CSA Certified, FM Approved Ball Valves

- FM Approved 1 Second or Less Shut-Off actuated units, Sizes ½" to 8"
- CSA Certified Emergency Safety Shut-Off Valve actuated units, Sizes ½" to 6"
- CSA Certified manual ball valves, Sizes ½" to 6"
- ULC Certified manual ball valves, Sizes ½" to 4"
- Floating-type ball valves
- Actuated units certified to temperature range of -50°C (-58°F) to +65°C (+149°F)
- Manual valves certified to temperature range of -60°C (-70°F) to +65°C (+149°F)
- Available in NPT, SW, and RF Flanged end connections
- Available in 600 WOG, 150#, and 300# in RF flanged
- Firesafe Certified
- NACE MR0175 - SOUR
- **SIL 3 certified by a 3rd party organization: FSES**
- **Fugitive Emission certification on select models**



VCI®

Introducing the
Series 260 Actuated Package



- Safety Emergency Shut Off Valves
- CSA Certified
- FM Global Approved

CSA Certified, FM Approved Ball Valves

- FM Approved, 1 Second or Less Shut-Off actuated units
- CSA Certified Emergency Safety Shut-Off Valve actuated units
- Floating type ball valve
- 2-Piece body, regular port
- Live loaded seats
- Certified to 175 psi
- Actuated units certified to temperature range of -45°C (-49°F) to +65°C (+149°F)
- Manual valves certified to temperature range of -40°C (-40°F)
- NPT end connections only
- Sizes ½" to 2"
- Firesafe design
- NACE MR0175 - SOUR



VCI®

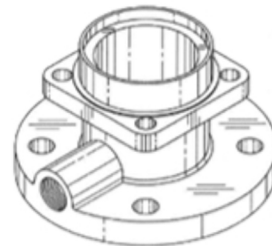


Series: T400
3 & 4 - Way Trunnion
Mounted Ball Valve



3 & 4 Way, Trunnion Mounted Ball Valves

- Bolted body type, Top-entry
- Available in 3 & 4 Way, Full port
- L port or T port configurations
- Cast Steel valve components
- One-piece stem-ball-trunnion
- Live loaded soft and metallic seats
- Trunnion and stem bearings
- Triple stem seals - live loaded
- Anti-Static devices
- Designed per ASME B16.34
- **Patented flanged ends with built-in bleed ports**
Patent File: 1295-0021
- Firesafe design
- NACE MR0715 - SOUR



VCI®



Series F200R
Floating Recessed Ball Valves

Recessed Floating Ball Valve

- 2-piece bolted body, full port
- Metal or soft seated configuration
- Metal seated - Class V shut-off
- Soft seated - Bubble-tight shut-off
- Sizes ½" - 12", ANSI Class 150-600# in RF flanged
- Recessed ball
- Anti blow-out stem
- Optional trunnion and drain feature
- Live-loaded seats
- Available in a range of materials

- Firesafe certified
- NACE MR0175 - SOUR
- **SIL 3 certified for 1002 configuration**
- **Fugitive Emission certified**
- API 6D available

VCI®



Instrument Isolation Valves

- Compact wafer-style body
- Unidirectional
- Size 2" x 1" x 2", ANSI Class 300 and 600#, other sizes available on request
- Bubble-tight shut-off
- Anti-blowout stem
- Stem and ball antistatic devices
- Live-loaded seats
- Raised face flanges to ASME B16.5
- Separate needle valve for isolation, vent/ test, and equalization.
- Firesafe design
- NACE MR0175 - SOUR

VCI®



V Control Ball Valves

- 3-piece and 2-piece, bolted body designs
- Sizes ½" – 12", ANSI Class 150-600# RF, and 3000 WOG
- Available in NPT, SW, BW, and RF ends
- Pneumatic and Electric configurations
- Available on soft seated and metal seated
- Anti-blow out stem
- Anti-Static devices
- Firesafe design
- NACE MR0175 – SOUR
- Fugitive Emission certification on select models

PORT ANGLE	10%	20%	30%	40%	50%	60%	70%	80%	90%	100%
	9°	18°	27°	36°	45°	54°	63°	72°	81°	90°

VCI®



Cryogenic Ball Valves

- Bolted body, 2-piece & 3-piece type, cryogenic, floating ball valves
- Regular and full port
- Ends available in NPT, SW, BW, RF, and RTJ
- Available in sizes of ¼" to 12"
- Available in ANSI Class 150 to 2500#
- Available with full cryogenic stem extension and for intermittent cryogenic service with standard-type stem
- Configurations available for -196°C (-320°F) and -126°C (-196°F) service
- Firesafe design

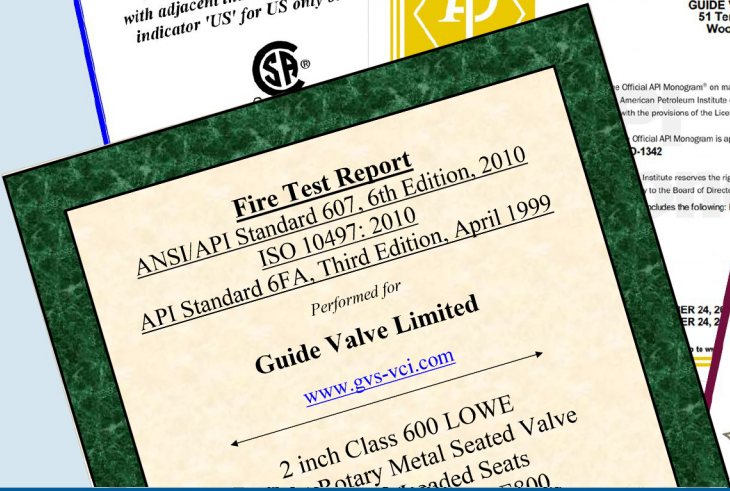
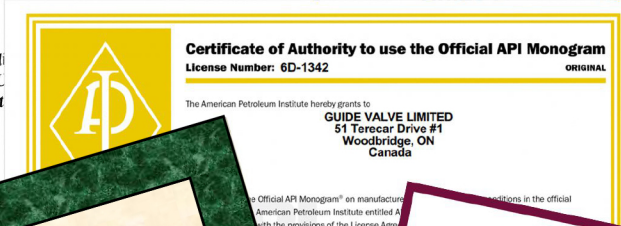
VCI®

Metal Seated Valves



Quarter-Turn, Metal Seated Valves

- 2-piece bolted body type - Top entry
- Quarter-turn operation
- Forged steel and Cast steel valve components
- Metal seated – Bubble-tight shut off
- Suitable for high temperature applications, up to +1200°F (+648° C)
- Available in sizes ½" – 2, ANSI Class 150 – 900#
- Available in NPT, SW, BW, and Flanged ends
- Full port and Regular port
- Firesafe certified
- NACE MR0175 – SOUR



Guide Valve Limited

51 Terecar Dr., Unit 1
Woodbridge, ON CANADA L4L 0B5
Tel: 905-761-7877
Fax: 905-761-7917

Guide Valve USA Limited

950 Echo Lane, Suite 200
Houston, Texas, USA. 77024

www.gvs-vci.com

sales@gvs-vci.com

Toll Free: 1-888-824-5693

Distributor / Agent: